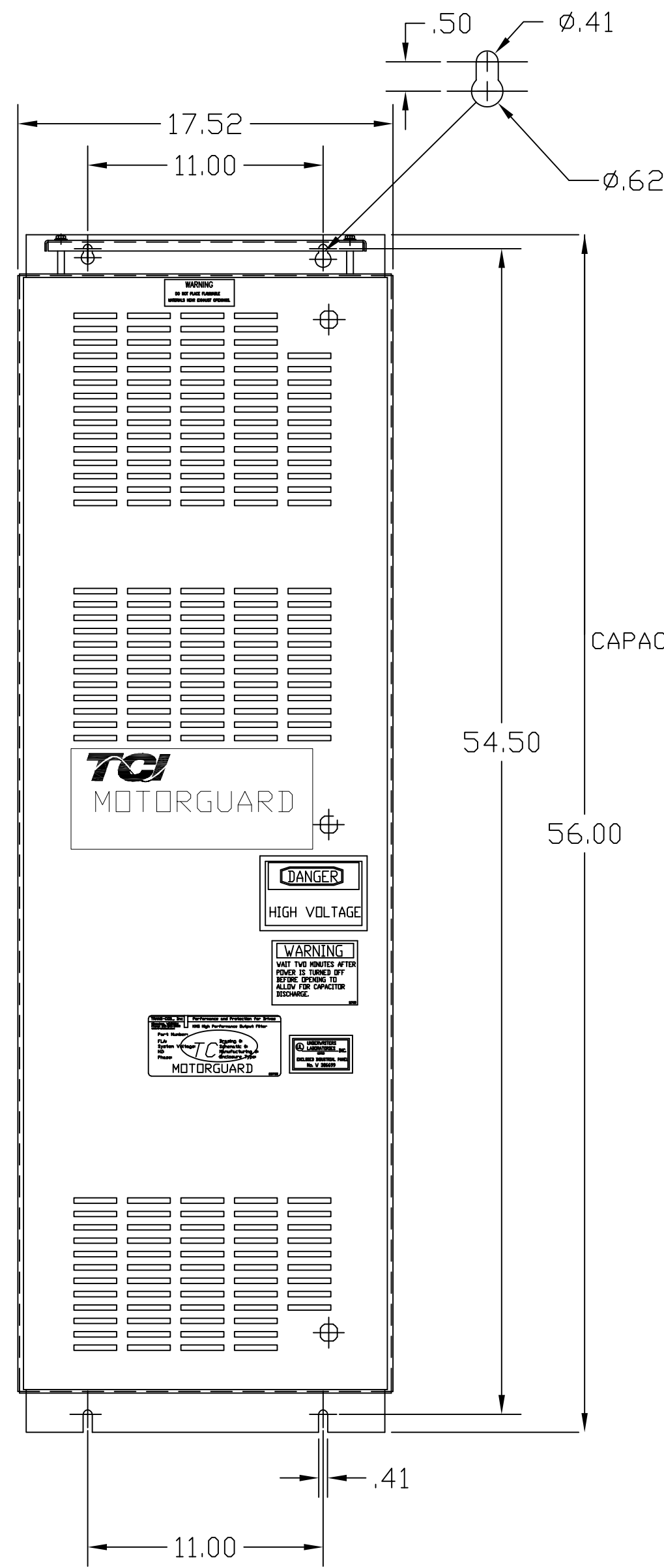
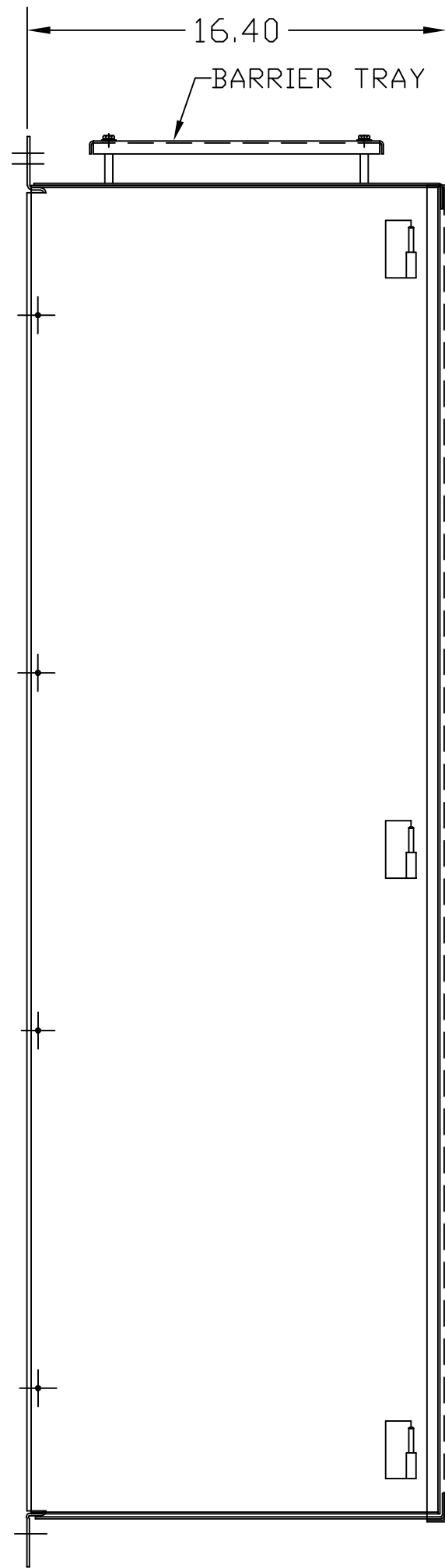
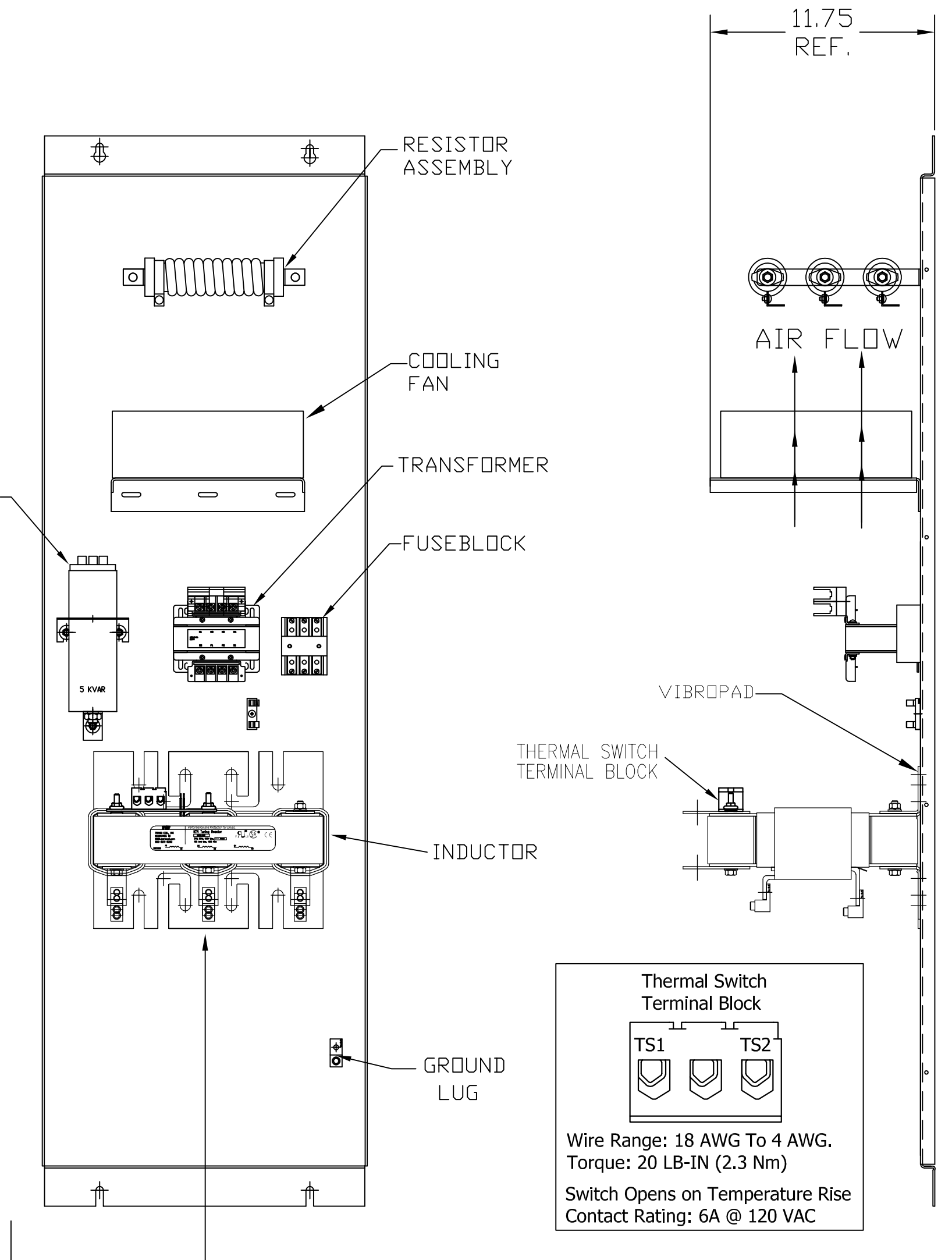


KMG80A01A

APPROX WEIGHT: 259LBS



FOR SCHEMATIC SEE DRAWING P/N 24281-3A



Thermal Switch Terminal Block

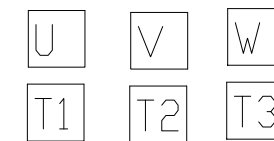
TS1 TS2

Wire Range: 18 AWG To 4 AWG.
Torque: 20 LB-IN (2.3 Nm)
Switch Opens on Temperature Rise
Contact Rating: 6A @ 120 VAC

SUGGESTED LOCATION FOR CUSTOMER INPUT/OUTPUT

ENCLOSURE NOT SHOWN

CUSTOMER CONNECTIONS



CUSTOMER CONNECTIONS
U V W T1 T2 T3
AND GROUND LUG.

WIRE SIZE (AWG)	RATED TORQUE (IN-LBS)
2/0-3	50
4-6	45
8	40
10-14	35

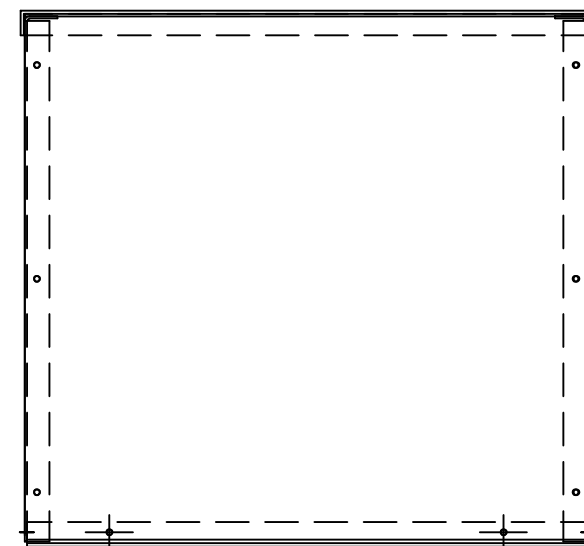
CUSTOMER IS RESPONSIBLE FOR PROPER INSTALLATION OF ASSEMBLY IN ACCORDANCE WITH LOCAL AND NATIONAL CODES.

KMG HIGH PERFORMANCE OUTPUT FILTER

PART NUMBER: KMG81A01A
FLA: 81
SYSTEM VOLTAGE: 480
HZ: 60
PHASE: 3

DRAWING#: 104357DG
SCHEMATIC: 24281-3A

MOTORGUARD



NO	REVISION	DATE	BY	TOLERANCES (EXCEPT AS NOTED)	DECIMAL	ANGULAR
					.XX ± .02	
					.XXX ± .01	
C	5043 THERMAL SWITCH TB ADDED	01/22/20	JRN		FRACTIONAL ± 1/32	
B	3042 LUG TORQ CHG	2/25/14	BMZ			
A	2702 RVSD UL SHIELD	1/15/12	RJC			
ND						± 1/2°

TCL W132 N10611 Grant Drive
Germanstown, WI 53022

Standard SineWave Filter
ENCLOSED, 60HP, 80AMP, 480V

DRN BY: DSW DATE: 10/07/2010 DWG. NO: 104357DG
SCALE: TO FIT APPRVD: C SHT.1 OF 1